



Radar

Trailers

SI-3C™

Special Application Radar

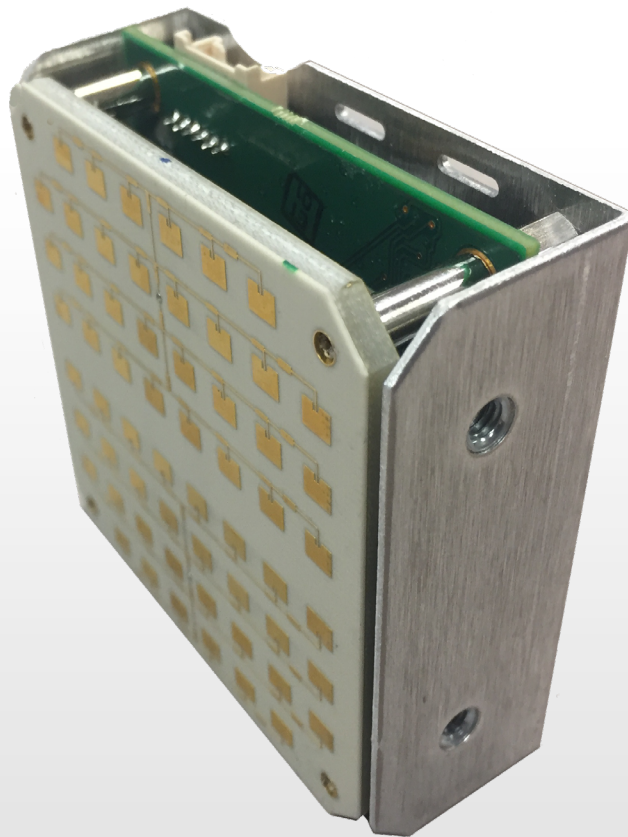
The SI-3C is a long range, low profile, low power radar designed for applications in which space, power or range are at a premium.

The SI-3C is our latest generation of OEM integratable traffic radars. It offers all of the advantages of its predecessor the SI-3 while minimizing space and power requirements.



Features

- Uses Less Than 80mA at +12VDC
- Operates from 8 VDC to 24 VDC
- Selectable MPH or km/h
- FCC Part 15 (No License Required)
- Narrow Beam Width: 12° Hor. x 24° Vert.
- 1-330 MPH (2-531 km/h) Speed Range
- Range: 1,500 Ft. Default
- 3,500 Feet Maximum Range on Average Size Vehicles
- Programmable for MPH or km/h
- Compact Size Measures Only
2.5" x 2.75" x 1.06" Deep
(63.5mm x 70mm x 27mm)
- Directional - Select Toward, Away or Both (Toward & Away)
- OEM configurable settings include:
Min/Max speed, sensitivity, cosine compensation, update rate, comm protocol, MPH/kph, and direction



Serving Law Enforcement for Over 60 Years

800.428.4315

www.DecaturElectronics.com